



## From the Manager's Desk

*Tim Whitman – General Aviation Manager*

It is with great excitement I introduce the first GA Newsletter providing you, our Airport users, and Corporate Partners, with news and information about Wiley Post and C.E. Page airports. We will also be providing you with updates on construction projects, safety issues, and spotlighting various businesses on both of our G.A. Airports.

I would also like to take just a moment and tell you all a little about myself. It's hard to believe it has already been seven months since I came on board with the Department of Airports as the Airport Manager for Wiley Post Airport and C.E. Page airports. I look forward to working with all of you and I am honored to be a part of our wonderful aviation community. My management philosophy is to manage and develop airports through positive government relationships and working with you, our corporate partnerships and airport users. I am a native Oklahoman, so it is nice to be home after managing various reliever airports in Florida, Georgia and Texas. I hold a Master's Degree from Oklahoma State University in Airport Administration and currently hold a seat on the U.S. Contract Tower Policy Board. I am also an active member of the American Association of Airport Executives and in the past served as a member of the South Central Chapter Board of Directors. Since

*Continued on page 2*

## INSIDE THIS ISSUE

- 1** From the Manager's Desk
- 1** Spotlight On: ServiCenter
- 2** Construction Updates
- 2** Operations Notes
- 3** Eyes on the Skies
- 3** Upcoming Events

## Spotlight On: ServiCenter

Every issue we will be spotlighting a different corporate partner in the OKC General Aviation community. Our corporate partners are a vital part of the GA team and we think that it is important to get to know them all better. This issue we are spotlighting The ServiCenter.

The ServiCenter is an aircraft maintenance organization which started in the 1950's as the service division for Aero Commander aircraft. Piston, turboprop, and turbojet powered Commander Aircraft were delivered to the new end-user during production days from their facility. During the 1980's, The ServiCenter transitioned from a service delivery maintenance facility to one of the premier full service maintenance facilities in the Southwest. In 1998, they became a privately owned company.



They are a full service aircraft maintenance, modification, inspection, avionics, paint, and interior facility specializing in light and medium turboprop and jet powered aircraft. They stock almost \$1,000,000.00 in parts inventory for many Commander and Raytheon models of aircraft. In the year 2000, they increased their abilities to include extensive maintenance, modification, and inspections on the entire family of Raytheon King Air aircraft including civilian, military, and airline models. With over 50 years of in house technician experience, an aggressive training program, and a robust inventory of parts, they are now also a one-stop facility for your King Air!

ServiCenter is an authorized service center for Raytheon and Twin Commander Aircraft as well as an authorized service and installation center for major avionics manufacturers.

They service and deliver aircraft throughout the

*Continued on page 3*

*From the Manager's Desk continued from page 1*

moving back to Oklahoma I have also become an active member of the Oklahoma Airport Operators Association. I am married to my lovely wife of almost 20 years, Heather and have a 4-year-old son Dylan who keeps me busy with weekend soccer games and various other activities.

I would like to extend an open invitation to all of you to stop by the office and give my staff and me the opportunity to visit face to face. Thank you for the opportunity to tell you all a little about myself and I look forward to working with you to keep your Airports operating as safely and efficiently as possible while improving and updating for future needs.

Best regards,

Tim E. Whitman

## Operations Notes

*Kristy Reed – General Aviation Operations Officer*

I would like to take this opportunity to introduce myself to you. On March 6, 2009 I joined the Oklahoma City Department of Airports Team as your new Operations Officer. I, along with my family, am relocating from Tulsa where I was an Operations Officer at Tulsa International Airport. I am a graduate of Oklahoma State University with a B.S. in Aviation Management (Go Pokes!) and am currently working toward a Master's Degree in Aviation and Space Sciences. I am also a commercial pilot with instrument rating. I have worked in aviation for nearly five years and look forward to many more. I am excited about being part of the team here in Oklahoma City and look forward to meeting all of you. If you need assistance please don't hesitate to contact me at 789-4061.

## Construction Updates

**Wiley Post Construction:** Orange and white-checked flags everywhere!!!



**Taxiway A, A-8 and Taxiway B extension:** The contractors and Airport Staff are wrapping up the last few items with the Taxiway A, A-8 and Taxiway B extensions which is Phase I of the project. Phase II will bring the needed utilities and infrastructure to the newly extended portion of A-8 to the east of A, allowing for the development of building sites that will

be builder friendly. We thank you for your patience, and airport staff will keep you posted on the progress.

**Terminal Renovation Project:** The terminal renovation is well under way and we ask that you please excuse or mess. The facelift will bring new paint, flooring and a new ceiling to the public areas and administrative offices and conference room. In addition, Annie Okies Restaurant received new flooring, a new kitchen ceiling, and a new storefront. With the exception of the second floor restroom, which we will try to address in the project as long as funds permit, we anticipate completion within the next few weeks. Thank you for your patience during the construction process.



**Lighting Projects:** Thanks to \$600K in funds we received as part of the National Stimulus Package, we are looking forward to updated, automated lighting and signage! April 7 is the pre-bid date for the updated lighting system, lighted hold signs and lighted distance remaining signs. The project should be completed by fall. Looks like orange and white-checked flags are going to be a semi-permanent fixture. Please be patient with our progress because good things are coming to Wiley Post!

**ILS Planned for 35 R at PWA:** Its has taken a lot of teamwork, planning, and just plain hard work but the design work for a new instrument landing system is well under way and at aproximately 80% completion. The project will cost a little over 2 million dollars and is being funded through sales tax dollars generated from the purchase of corporate jet aircraft. Installation of the ILS to Runway 35R will significantly improve access to the Airport and enhance safety to arriving aircraft during IFR meteorological conditions.

The construction of the new ILS should begin in late summer with an estimated completion date of early 2010. Over the next few months' airport staff will keep you up to date on the progress of this project and aware of any construction NOTAM's associated with the project. Please remember to always check Airport NOTAMS before you fly as construction on the airport can cause NOTAMS to change daily.

**C.E. Page Construction:** Taxiway A-4 is scheduled to be reconstructed. In addition, a new North/South taxilane will be constructed to service the new A-4.

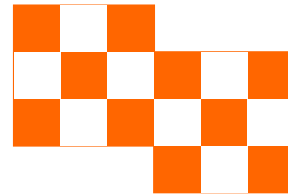
*Continued on page 3*

*Spotlight on: Service Center continued from page 1*

world to areas including the United States, Mexico, Western Europe, Canada, Central America, and South America.

Their newly outfitted ServiCenter FBO facility caters to transient aircraft with quality AirBP fuels and oils. They have ramp accessibility for any size corporate aircraft, competitive fuel prices, and friendly customer service!

*Construction Updates: continued from page 3*



The project will be completed in three phases. Phase I will involve the construction of temporary taxilane extensions. This is necessary since we will need to close the only taxiway feeding the hangars to complete the project. Phase II will be the phase that Taxiway A-4 and the new taxilane are actually constructed. This will require some temporary closures of the taxiway and Runway 17L/35R but rest assured that we will do everything we can to make sure that these closures are as seamless as possible. Finally, Phase III will include the removal of the temporary extensions and reconstruction of fencing. We plan to have a pre-construction meeting prior to the first shovel of dirt and will be sending information on the time and location. We will keep you up to date on the project.

### **Eyes on the Skies: Springtime Brings Thunderstorms**

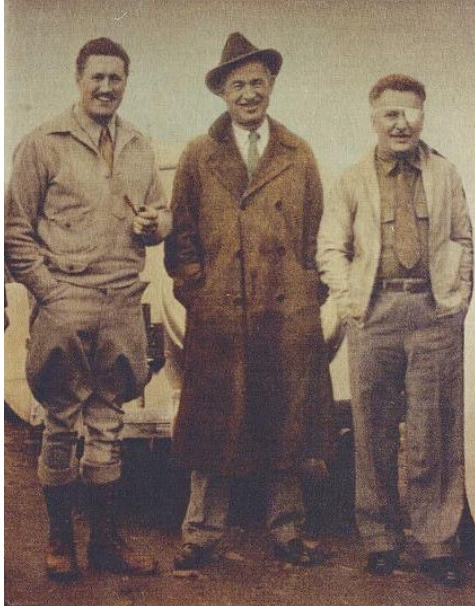
As the spring storm season approaches us we need to remember that it is estimated that over 100,000 thunderstorms occur in U.S. airspace each year. Let us all be reminded that thunderstorms can develop quickly and are sometimes very hard to spot. Being in contact with ATC may not provide you all the information you need to make a safe decision as pilot in command. That being said, here are some "Points to Remember" from AOPA's Safety Foundation:



*Continued on page 4*

## **AIRPORT PHOTO OF THE MONTH**

Anyone interested in sharing a new, old, or just interesting photo should submit your photo via email to [kristy.reed@okc.gov](mailto:kristy.reed@okc.gov) by June 1, 2006.



## **UPCOMING EVENTS**

### **YOU'RE EVENT HERE!**

EMAIL KRISTY REED: [KRISTY.REED@OKC.GOV](mailto:KRISTY.REED@OKC.GOV)

TO LIST YOUR UPCOMING EVENTS IN THE NEXT NEWSLETTER

(Next issue will be July so get them in by June 1<sup>st</sup>)

## AIRPORT CONTACTS:

### MAILING ADDRESS

5915 PHILIP J. RHOADES AVE. RM. 104  
BETHANY, OK 73008

### GENERAL AVIATION MANAGER

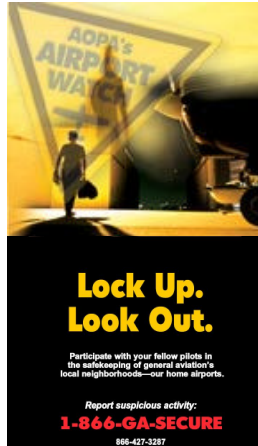
Tim Whitman  
405.789.4061  
tim.whitman@okc.gov

### FIELD OPERATIONS LEADER

Chuck Thompson  
405.789.4671  
charles.thompson@okc.gov

### OPERATIONS OFFICER

Kristy Reed  
405.789.4061  
kristy.reed@okc.gov



*Eyes on the Skies: continued from page 3*

- Thunderstorms are extremely dangerous: They can literally tear an airplane to pieces.
- If thunderstorms are widespread, avoid the entire area. Don't try to pick your way through.
- Approach controllers use ASR, which is a near real-time radar display.
- Center controllers use WARP, which has a time lag and does not display light precipitation.
- Weather advisories are not ATC's number one priority. Verify the services you're receiving, and use other resources if necessary.
- You're the PIC: Ask for what you need, and don't be afraid to negotiate with ATC.

## Corporate Contacts:

### AIR ONE

405-789-0000  
flyairone1@aol.com

### AMERICAN JET CHARTER, INC.

405-495-5453  
www.american-jet.com

### ATLANTIC AVIATION

405-787-4040  
www.atlanticaviation.com

### AVIATIONS SERVICES UNLIMITED

405-787-8111  
westwinddoctor@aol.com  
www.aviation-services-okla-city.com

### BLAKNEY AVIATION

405-495-4747  
keblakney@aol.com

### BOOTS EDGE REPAIR CORPORATION

info@bootsedge.com  
www.bootsedge.com

### CALVIN TAFF ELECTRONICS

405-789-1268  
gchristian@calvintaff.com

### CAPITAL AVIATION, INC.

405-495-1141  
www.capitalaviation.com

### CESSNA 172-182 CLUB

405-495-8664  
www.cessna172-182club.com

### THE COMMEMORATIVE AIR FORCE

www.oklahomawing.org  
www.saveaninvader.org

### E.T. MECHANICAL, INC.

405-495-2807  
etparts@icon.net

### FAA SYSTEMS MANAGEMENT OFFICE

405-798-2000  
www.faa.gov

### INTERNATIONAL COMANCHE SOCIETY

405-491-0321  
www.comancheflyer.com

### LBR Inc.

405-789-0200  
www.lbrok.com

### LEGACY AVIATION SERVICES, INC.

405-350-2100

### MID-CONTINENT AIRMOTIVE, INC.

405-354-6631

### OKLAHOMA AVIATION AND CESSNA PILOT CENTER

405-78-PILOT  
www.oklahomaaviation.com

### RUNWAY CAFÉ

405-787-7732

### SOUTHERN WINGS AIRCRAFT SALES

405-789-7402  
405-789-5395  
southwaircraft@sbcglobal.net  
www.southernwingsaircraft.com

### THE SERVICENTER, INC.

405-789-5000  
customerservice@thescinc.com  
www.thescinc.c